



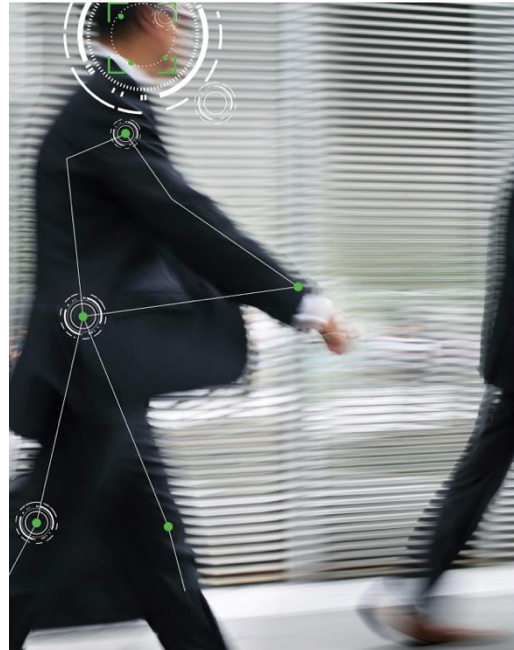
In today's world, where technology and urbanization have opened more doors for people than ever before, access to information, people and places has never been easier.

With this openness, providing accurate identification of authorized persons has taken on a renewed importance. However, current identification solutions often result in slowing down or stopping.

In today's fast-paced world, slowing down for the sake of identification is unacceptable.

FST Biometrics has developed a visual identification technology that is the ultimate fusion of biometric identification technologies to provide fast, non-invasive and accurate identification for identity at the speed of life.

IMID Access, the company's core In Motion identification solution, provides best-in-breed identification and access control software, advanced visitor management, remote monitoring and more. Utilizing Visual Identification™ technology, FST's deep fusion of biometrics identifies authorized users from a distance and in-motion.



User Experience

IMID Access provides a seamless user experience that is both fast and efficient. Registered users do not have to slow down, sign in or stop. Rather, they are identified as they walk naturally.

Technology

Our Visual Identification technology is accurate, reliable and non-invasive, using a fusion of biometrics including face recognition and body behavioral analytics to identify users. Critically, the user is not required to supply more invasive biometrics such as fingerprints or iris scans. Rather, IMID Access identifies users based on naturally exposed biometric markers.

Fraud Detection

Finally, IMID Access has a built-in fraud prevention network to repel fraud attempts. Through fusing face recognition and body behavior analytics, with a powerful presentation attack detection algorithm, FST's identification is ultra-secure. After being tested by the CPNI (Center for the Protection of National Infrastructure of the United Kingdom) IMID is approved for UK Government Use (For details please contact CPNI).

These features allow IMID Access to provide identity at the speed of life.

Applications



Corporate

From large corporations to smaller businesses, manufacturing facilities, labs and other organizations that have critical information, processes and environmental conditions pertaining to their operations, ensuring authorized personnel have unencumbered access is vitally important. IMID Access seamlessly identifies known employees, allowing them to enter without restriction, creating an “Open Campus” atmosphere without compromising on the ultimate security needed to protect the organization's physical and intellectual assets. Visitors are identified through the IMID visitor management feature. Business stops for no one, and with IMID Access, corporations can move securely and seamlessly through their day.

Residential

In residential developments, such as those supported by the Housing and Urban Development (HUD) department, residents, caregivers and visitors deserve a secure feeling in their homes. However, providing secure access in residential facilities should not interfere with residents' time and ease-of-entry. IMID Access provides this convenient, non-invasive identification for residents, while simultaneously denying access to those violating regulations, as well as unwanted guests.



Seamless
Identification



Seamless
Access



Seamless
Technology



Seamless
Integration

Commercial

Commercial spaces are often bustling business centers with a great deal of foot-traffic. Using the IMID Access software, authorized users in commercial buildings and centers can enjoy accurate identification to gain access to restricted areas. IMID Access can be easily integrated with many turnstile technologies, and can identify up to 30 individuals per minute approaching a turnstile. Authorized visitors can enjoy the same non-invasive, seamless experience with the automated visitor management feature.

Healthcare

Healthcare facilities provide true life-or-death care for patients. Yet, these active facilities, with hundreds or even thousands of patients, doctors, nurses and other staff, need to ensure the safety of patients and employees alike. Also, in an emergency situation, a doctor or nurse does not have time to find and swipe his/her RFID card. Those few seconds can truly make the difference. IMID Access provides the speedy identification necessary to ensure the pace of hospital life is not impacted by cumbersome key cards or sign-ins. Authorized users are simply identified, and continue on with their lifesaving work at the pace required by each situation.

Recreational Facilities

Gyms, stadiums, private clubs and community centers manage many entries a day by members, visitors, staff and ticket holders. The management of each of these facilities must ensure that unwanted people are kept out to ensure safe and efficient operations. Furthermore, club



management want to create a friendly, welcoming environment with excellent and personalized attention given to members, while simultaneously preventing non-members from fraudulently gaining access to facilities. IMID Access allows clubs, gyms and stadiums to provide ultimate service to members and patrons, while preventing those unauthorized from gaining entry.

Government Facilities

Government facilities have a wide range of security requirements, from authorized entry to buildings with sensitive data to locations housing individuals who are of national significance (military leaders, heads of state, etc.). In addition, other sites, such as restricted areas of airports designated for employees only demand extreme security that is best solved through a combination of RFID and IMID. IMID Access manages identification of authorized users, and keeps track of who enters and exits through various access points, while preventing unwanted individuals from entering restricted areas.



High Accuracy



Fast and Efficient



Non-Invasive

Software Modules and Add-ons

There are several additional modules that can be integrated with IMID Access, depending on the customer's needs.

IMID Attendance

The IMID Attendance module tracks office hours of employees based on first entry and last exit. This can be done on a daily, weekly, or monthly basis.

IMID Voice

IMID Voice enables the fusion of IMID Access and biometric voice verification, providing an added layer of security for particularly extreme scenarios.

IMID Remote

IMID Remote allows a central station server to manage and control multiple sites, and provides remote backup and maintenance.



IMID Enterprise Manager

IMID Enterprise Manager allows multi-site enterprises to deploy IMID Access across their organizations. Users simply enroll in the Enterprise Manager, and each additional site synchronizes with the central Enterprise Manager database. This allows all users within an organization to be identified at any site according to each user's access permissions.

Mobile Applications

IMID Mobile

IMID Mobile is a smartphone application that extends the abilities of security personnel, giving them the ability to identify enrolled users on their mobile devices and receive complementary information regarding the enrolled user.

IMID Visit

IMID Visit is a visitor management application that identifies and manages authorized visitors by using a "V-Key," a unique encrypted QR code. The visitor can use the "V-Key" to be biometrically enrolled in the system, and then for identification in the reception area. Upon recognition, IMID will notify arrival to the host and grant the visitor seamless access to the site.

IMID Cast

FST's IMID Cast application – available on selected tablets – allows users to enroll themselves as authorized users into the IMID Access database by entering a PIN code and then following a simple enrollment process.

IMID Cast also provides real-time feedback to users as they approach access points. As a user walks towards the door while looking towards the camera, he/she will be given color-coded feedback, which indicates whether they are granted access or not.



Integration

FST Biometrics' core software, IMID Access, uses In Motion Identification™ technology. The solution is based on a deep fusion of biometric identifiers including face recognition and body behavior analytics.



IMID Access with In Motion Identification™ is an open system that can easily integrate with many existing secure access infrastructures and other 3rd party systems. This is completed through our API, based on a standard, secured protocol. This allows the system to work with many pre-existing infrastructures in a variety of physical settings.

Performance Specifications

Users supported	Up to 50,000
Speed supported	Walking speed
Recognition time	< 2 seconds
False accept rate	3/10,000
False reject rate	2/1000
Lighting Requirements	200 lux *
Concurrent identification	Up to 8 users simultaneously

* For version 3.6.X